



To Our Friends and Neighbors

300 Smith Ranch Road, San Rafael, CA 94903
Phone 415-472-1734 • Fax 415-499-7715
www.lgvsd.org

Board of Directors

Megan Clark
Russell R. Greenfield
Larry H. Loder
Craig K. Murray
Judy Schriebman

Board Meetings are

held at 4:30 p.m. on
the second and fourth
Thursday of each month.

ECRWSS–Postal Customer

District Administration

Mark R. Williams, *General Manager*

♻️ Printed on recycled paper using soy-based inks.

RECYCLED WATER PROJECT UNDER WAY

EXTENSIVE GRANT FUNDING LOWERS COSTS

Las Gallinas Valley Sanitary District recently awarded a construction contract to begin its new, advanced Recycled Water Treatment Facility, which will provide high quality water for landscapes at schools, parks, and other large irrigated areas.

The approximately \$6 million project is partially funded by over \$1.6 million in federal and state grants obtained through the District’s participation in the North Bay Water Reuse Authority.



The reclamation ponds are an important source of water for the new high-quality recycled water treatment plant. The Canada Goose overpopulation makes it more difficult and costly to create much-needed recycled water from the ponds.

GROWING PROBLEM: GOOSE POPULATION BOOM

LGVSD reclamation ponds are a low-cost, environmentally smart way to store water for later treatment, reuse, and recycling. A variety of nesting and migrating birds flourish within the preserved wildlife habitat.

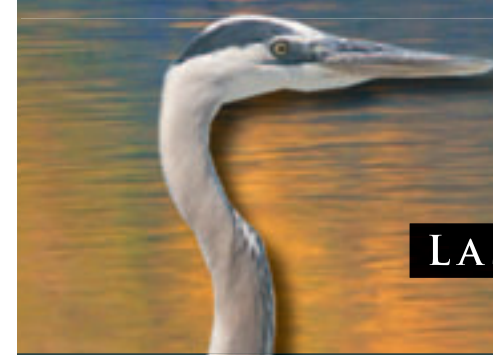


However, Canada Geese are multiplying at the site, and the large, aggressive birds are causing environmental harm and making water recycling more difficult and costly by:

- Fouling the reclamation pond water with huge amounts of goose feces—up to two pounds per day per goose!
- Damaging habitat quality and biological diversity for other birds and wildlife.
- Potentially spreading disease to birds and people.
- Increasing the cost of treating reclaimed water and/or making it more difficult to recycle and reuse.

Goose Management Plan. The District is working with an avian biologist. He has developed a safe and humane Goose Management Plan designed to limit the growth in the bird population without harming or chasing away adult geese. If you have questions about the program, would like updates or input, please contact Mark Williams, General Manager at 415-472-1734.

Presorted
Standard
US Postage
PAID
San Rafael, CA
Permit No. 87



THE HERON

LAS GALLINAS VALLEY SANITARY DISTRICT

www.lgvsd.org

MAY 2012

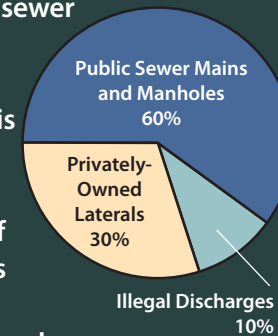
What is Inflow and Infiltration?

Inflow: Direct flow of rainfall into a sewer system from downspouts, drains, yards, parking lots and streets.

Infiltration: Rainfall that percolates into the ground then enters the sewer system through failed joints, cracks and holes.

Sources of Inflow and Infiltration

About 30% of Inflow and Infiltration is from private sewer lateral pipelines that connect buildings to the public sewer main or manhole. About 60% is from public sewer mains and manholes. About 10% is from illegal discharges, such as roof downspouts and outside drains to laterals.



It is harmful and illegal to purposely discharge rainwater into your sewer lateral or the District’s sewer system.

WE MUST REDUCE INFLOW AND INFILTRATION

Award Winning Sewer System. Las Gallinas Valley Sanitary District has repeatedly been awarded best sewer pipeline, small collection system in the region—and last year in the entire state. Furthermore, in order to meet tough regulatory requirements and avoid costly fines, we are upgrading our treatment plant.

But Challenges Remain. Much of our sewer system is more than 50 years old. As our sewer system continues to age, infiltration of stormwater into cracks and breaks in sewer pipelines is threatening to cause sewer overflows and straining our treatment plant’s capacity.



Sewer manhole cover shown overflowing.

The Problems Caused by Inflow and Infiltration. When large amounts of stormwater enter the sewer system, wastewater volumes can increase by 1000% or more. The mix of stormwater and sewage can exceed pipeline and treatment capacities, causing spills and other problems.

Lawsuits and Huge Fines Can Result. Sewer spills and overflows from Inflow and Infiltration can lead to costly environmental lawsuits and huge regulatory fines.

Proactive Action Will Save Money. Regulators are starting to mandate how local agencies reduce Inflow and Infiltration—and their solutions are usually costly. Las Gallinas Valley Sanitary District is developing its own cost-effective solutions before regulators impose more costly mandates.

SEE INSIDE PAGES FOR DETAILS ON THE INFLOW & INFILTRATION PLAN

PROVIDING THE BEST, MOST COST EFFECTIVE WASTEWATER SYSTEM



WHY WE WILL NEED YOUR HELP

Las Gallinas Valley Sanitary District does its job well—several awards demonstrate that. Challenges are constantly arising that require thoughtful and creative planning and action. As we face challenges, our goal is to be proactive and develop solutions early when there is more flexibility and options for keeping costs down. This newsletter describes a number of such challenges—and encourages you to learn more and provide your input as we develop solutions.

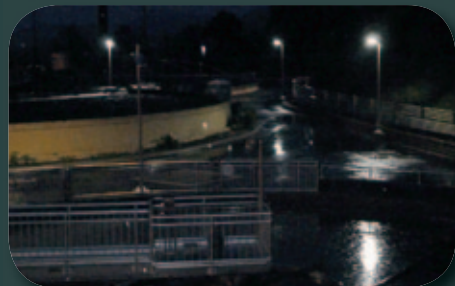
LIGHTING CHANGE DECREASES GLARE, SAVES MONEY

One environmental challenge is the new issue of light pollution. The 1980s-era lighting at the District's treatment plant causes undesirable glare that disturbs some neighbors.



Old treatment plant lights.

In response, the District retained a lighting consultant to design a new lighting system. The result: a plan that will provide adequate lighting for security and worker safety, reduce glare into the night sky and use approximately 65% less energy—saving money in the long run. The first high-efficiency, low-glare lights have been installed.



New, low-glare, energy-saving lights.



Installing corrosion protection on existing pipelines.

PROTECTING PIPELINES, SAVING MONEY

The District uses a technology called cathodic protection in order to control the corrosion of metal. This is a cost-effective way to extend the lifespan of our pipeline.

LONG-TERM PLAN TO RESOLVE INFLOW & INFILTRATION (I&I) PROBLEMS

Your Sanitary District conducted a nearly year-long study of Inflow and Infiltration problems, and has developed a multi-pronged program of solutions.

WE ARE HELPING PRIVATE PROPERTY OWNERS TO REPAIR THEIR SEWER LATERALS

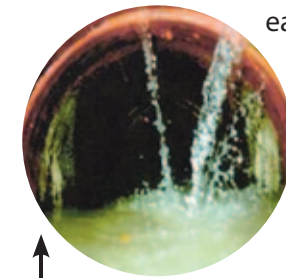
The District is planning to undertake a number of programs to require and assist homeowners and businesses to repair their sewer laterals.

- 1 Lateral Assistance Program.** Provides customers with funds at a low interest rate to pay for needed lateral repairs.
- 2 Offer Lateral Group Discount for Repairs.** Obtain a group discount for lower-cost sewer lateral repair, and make that discount available to the public.
- 3 Lower Lateral Repair.** Replace the lower laterals on private property during public sewer main rehabilitation when approved by the private property owners (program already underway).
- 4 Target Offenders.** Increase, sewer service charges for properties that discharge high levels of I&I.
- 5 Rigorous Inspection Program.** Require inspection (and repair when needed) under the following conditions: when there is a history of lateral blockages or spills from a property; during remodels over \$50,000; if defects are found in laterals during smoke or video testing; when a new customer applies for service; and when a property's use is changed, for example, from an office to a restaurant.

WE ARE IMPROVING OUR PUBLIC SEWER SYSTEM

1 Increasing Treatment Plant Capacity. We are increasing the treatment plant's capacity to treat large flows from I&I.

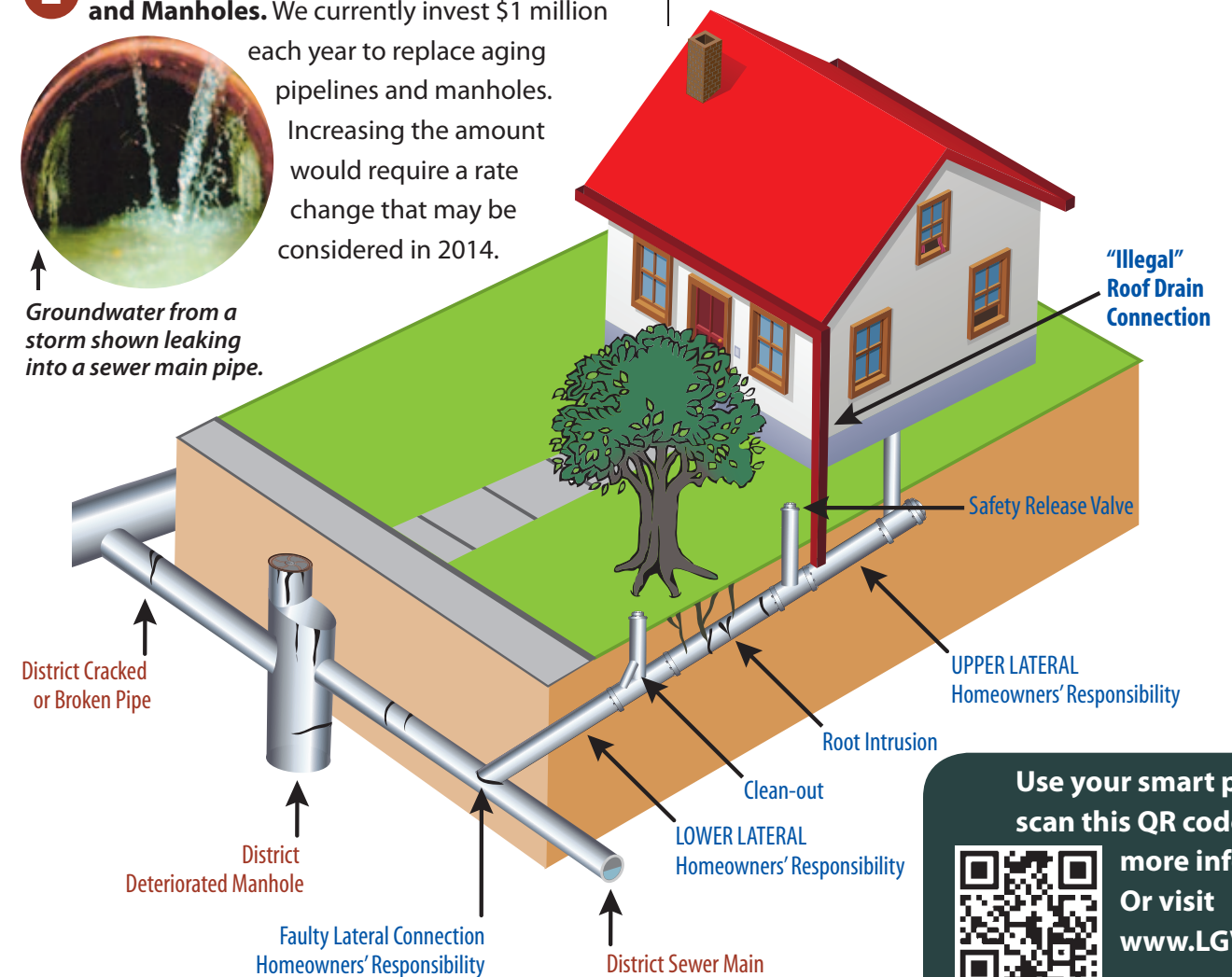
2 Speeding Repair of the District's Pipelines and Manholes. We currently invest \$1 million



Groundwater from a storm shown leaking into a sewer main pipe.

each year to replace aging pipelines and manholes. Increasing the amount would require a rate change that may be considered in 2014.

3 Ongoing Video Inspection and Smoke Testing. Our staff is continuing to implement its sophisticated, computer-based inspection and maintenance management system supported by highly-trained field crews.



Use your smart phone to scan this QR code to get more information. Or visit www.LGVSD.org