

**RESOLUTION NO. 2011-1933**

**A RESOLUTION CONFIRMING THE ANNUAL SEWER SERVICE CHARGE  
AND SUPPLEMENTAL SERVICE CHARGES FOR THE  
LAS GALLINAS VALLEY SANITARY DISTRICT  
FOR THE FISCAL YEAR 2011-12**

RESOLVED, by the Sanitary Board of the Las Gallinas Valley Sanitary District, Marin County, California, as follows:

WHEREAS, the District did on June 4, 2009 have a Public Hearing on the Proposed Increase in Sewer Service Charges,

AND WHEREAS, the Board did on June 4, 2009 adopt Ordinance No. 144, which adopted the annual rate increases as outlined in the Proposition 218 Notification, a copy of which is attached as Exhibit A and incorporated into this resolution,

AND WHEREAS, the Board pursuant to the adoption of Ordinance No. 144 desires to affirm that the annual sewer service charge for the fiscal year 2011-12 is \$613 per year starting on July 1, 2011 as indicated in the Proposition 218 Notification referred to above,

HOWEVER, the Board determined that it will not increase the annual sewer service charge for the fiscal year 2011-12 to \$613 and instead charge only \$590, that deduction being warranted by reductions in operating and maintenance expenses.

AND WHEREAS, on June 4, 2009, the Board approved Ordinance No. 142, An Ordinance Amending Title 5, Chapter 2, of the Ordinance Code of the Las Gallinas Valley Sanitary District, Regarding the Marin Lagoon Sewer Service Surcharge that the following sanitary sewer service surcharge, in addition to the annual sewer service charge, shall be:

Marin Lagoon Homeowners Association \$110 per annum

AND WHEREAS, on June 4, 2009, the Board approved Ordinance No.143, An Ordinance Adding Title 5, Chapter 3, of the Ordinance Code of the Las Gallinas Valley Sanitary District, Regarding the Captains Cove Sewer Service Surcharge that the

following sanitary sewer service surcharge, in addition to the annual sewer service charge, shall be:

Captains Cove Homeowners Association          \$100 per annum,

NOW THEREFORE, THE SANITARY BOARD OF THE LAS GALLINAS VALLEY SANITARY DISTRICT, MARIN COUNTY, CALIFORNIA, HEREBY RESOLVES THAT,

1. The annual sewer service charge of \$590 per sanitary unit shall be the rate for the fiscal year 2011-12;
2. The annual sanitary sewer service surcharge for the Marin Lagoon and Captains Cove areas will be as referenced above for the fiscal year 2011-12.

\* \* \* \* \*

I hereby certify that the foregoing is a full, true, and correct copy of a resolution duly and regularly passed and adopted by the Sanitary Board of the Las Gallinas Valley Sanitary District, Marin County, California, at a meeting thereof held on June 9, 2011, by the following vote of the members thereof:

AYES, and in favor thereof, Members: *Clark, Greenfield, Loder, Murray and Schriebman*

NOES, Members: *None*

ABSENT, Members: *None*

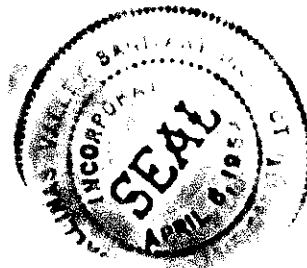
ABSTAIN, Members: *None*

*Susan McGuire*  
 Susan M. McGuire, District Treasurer,  
 Acting District Secretary,  
 Las Gallinas Valley Sanitary District

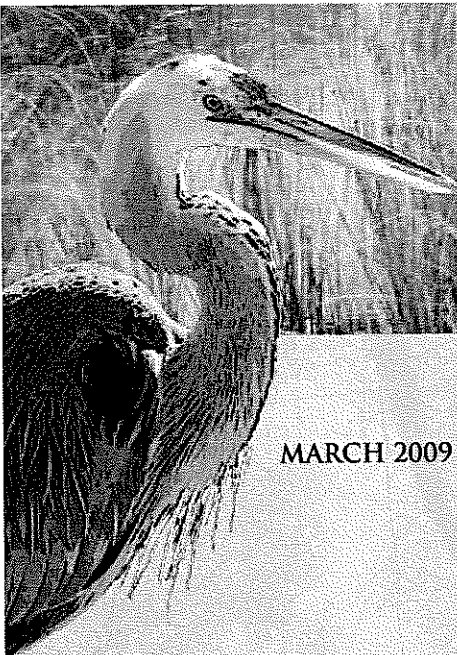
APPROVE:

(seal)

*Judy Schriebman*  
 Judy Schriebman, President



# NOTICE TO PROPERTY OWNERS



## LAS GALLINAS VALLEY SANITARY DISTRICT

MARCH 2009

### PUBLIC HEARING ON PROPOSED INCREASE IN SEWER SERVICE CHARGES

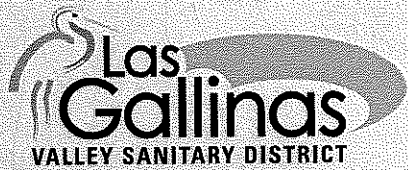
*(Please share this information with tenants.)*

#### PUBLIC HEARING

**Thursday  
June 4, 6:00 p.m.**

**Las Gallinas Valley  
Sanitary District**

**Miller Creek School gym,  
2255 Las Gallinas Avenue,  
San Rafael**



#### BACKGROUND

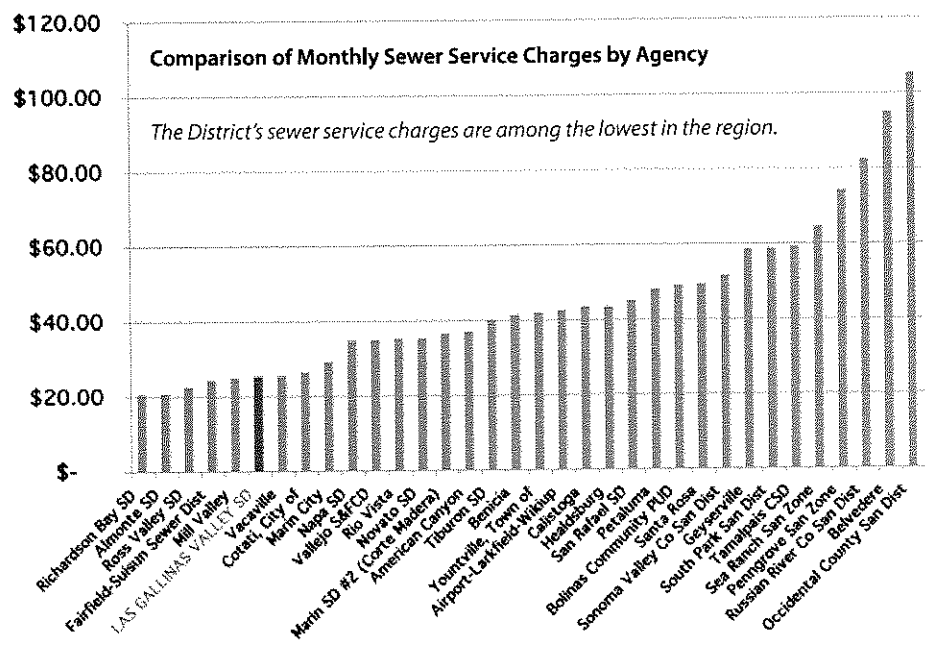
Las Gallinas Valley Sanitary District provides wastewater collection, treatment, recycling and disposal services to properties located within its boundaries. To cover the cost of these services, the District currently charges \$303 per year (83¢ per day) per single family residence, apartment or equivalent residential unit. The sewer service charge is based on the cost to collect, transport, treat, recycle and dispose of wastewater

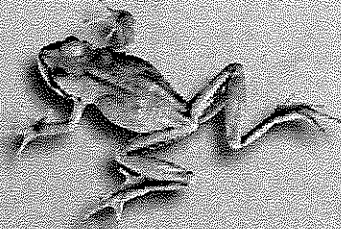
#### SEWER SERVICE CHARGE INCREASE ESSENTIAL TO COVER UPGRADE COSTS

The District's operation, maintenance and repair programs for its system have been very effective. The sewer pipeline collection system was recently awarded best in our three-county area, however the system is aging and needs critical upgrades. The District is funding only the projects needed to protect the environment, continue to provide quality and reliable services, and meet ever-increasing state and federal regulations. To pay for the upgrades, a sewer service charge increase is required.

#### DISTRICT'S RATES LOW

The District's rates currently are among the lowest in the region, and even with the proposed increases, the rates are expected to remain below average. Rates are designed to cover the actual cost of service.





**Las Gallinas Valley Sanitary District has the lowest spill record in Marin County. The listed improvements are critically needed to maintain that level of quality and protection.**

## PROJECTS TO UPGRADE THE DISTRICT'S AGING FACILITIES

*To accomplish the upgrade of the District's aging facilities efficiently and at the lowest cost, the District has undertaken an extensive system-wide analysis that has considered every aspect of its operation: facilities, staffing, engineering, finance and regulatory requirements.*

*From this analysis, the District has developed a detailed plan for the next five years that prioritizes the most important projects to be accomplished and identifies the minimum charges needed to fund them.*

### SEWER PIPELINE COLLECTION SYSTEM

- Rehabilitate about 3,700 feet of sewer main and lower lateral pipeline each year, at cost of \$930,000 a year.
- A 10-year program to increase sewer main capacity by increasing the size of 1,733 feet of pipeline annually, starting in 2011, at a cost of \$1,493,735 a year.
- A new loan program to help homeowners pay for repairs of their sewer laterals, at a cost of \$100,000 a year, as well as a new lateral inspection program at a cost of \$71,800 a year.

### PUMP STATIONS AND FORCE MAINS

- Equip 25 pump stations with redundant alarms and level control systems at a cost of \$220,500 a year.
- Replace aging portions of force mains, at a cost of \$178,000 a year.

### TREATMENT PLANT

- Rehabilitate aging facilities to maintain treatment quality, meet new regulations, and avoid fines and work hazards at a total cost of \$9,972,905, or \$775,000 per year.

### COOPERATIVE WATER RECYCLING

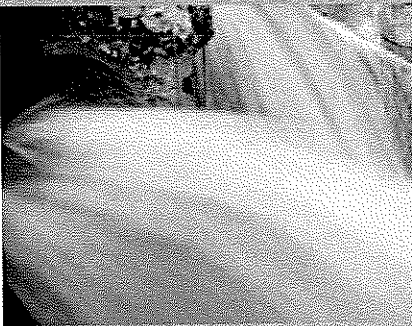
- Work cooperatively with other agencies to expand use of recycled water for irrigation, at a total cost of \$3,433,000, with \$135,000 the first year.

### RECLAMATION AREA

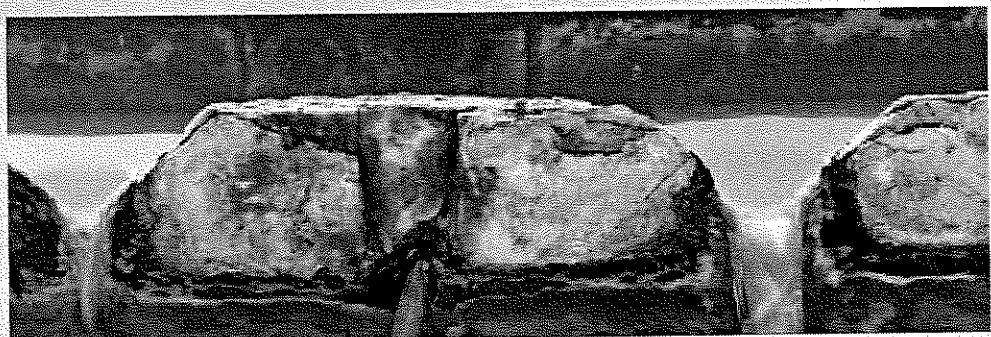
- Increase maintenance of the District's Reclamation Area's levees and maintenance of Miller Creek at a cost of \$151,162.

### GENERAL UPGRADES AND REPAIRS

- Proactive maintenance to avoid unexpected breakdowns and emergency repairs, at a cost of \$738,000 the first year.



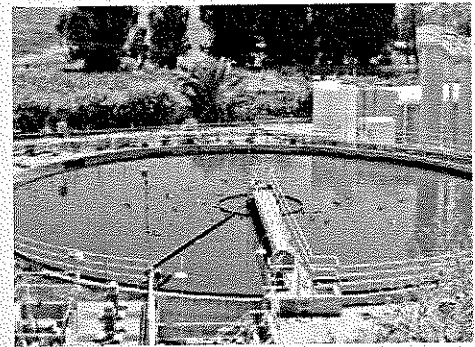
*We have wrung every ounce of value out of our sewer collection, treatment and recycling system, and now must begin an extensive facility upgrade and replacement program.*



*Example of metal equipment with a hole rusted through it.*

# PROPOSED SEWER SERVICE CHARGE INCREASES

*With current economic conditions affecting many of our customers, new charges are limited to the lowest level possible while providing sufficient funding for current and future operation and maintenance, as well as capital improvement budgets.*



## PROPOSED RESIDENTIAL CHARGES

**Each residential unit** is charged the basic flat rate (see below). This applies to single-family homes and residential units in apartments, condominiums and other multi-family dwellings, and mobile home parks.

### CURRENT BASIC RATE

\$303 a year or 83 cents a day.

### PROPOSED BASIC RATE

2009-10, \$493 a year or \$1.35/day.  
 2010-11, \$563 a year or \$1.54/day.  
 2011-12, \$613 a year or \$1.68/day.  
 2012-13, \$662 a year or \$1.81/day.  
 2013-14, \$680 a year or \$1.86/day.

**Rooming houses.** The basic flat rate is applied to each of the first two rooms used for renting and one-quarter of the basic rate for each additional rented room.

**Motels.** Each motel unit with a kitchen is charged the basic rate, and each motel unit without a kitchen is charged one-half the basic rate.

## PROPOSED SEWER SERVICE CHARGES FOR SCHOOLS

**Schools without showers or cafeteria facilities.** 0.01 times the basic rate per student, faculty and employee.

**Schools with showers or cafeterias** are charged 0.02 times the basic rate per student, faculty and employee.

## PROPOSED NON-RESIDENTIAL SEWER SERVICE CHARGES

Increases for non-residential rates are proportional to the rise in residential rates. Rates are calculated individually for each type of non-residential use.

To determine the cost to collect and treat wastewater from a non-

residential customer, the District calculates the cost based on water usage and a strength factor, which is an average cost to treat wastewater from a particular type of non-residential customer. Thus, a low

water user would pay less than a high water user in the same category of non-residential customers with the same strength factor.

<p><b>Domestic-strength users</b>, including: commercial, office buildings, retail, churches, halls, public agencies, laundromats, service stations, medical offices, barber and beauty shops, car washes, convalescent hospitals, hospitals</p>	<p>The basic rate times the average summer and winter water use times a strength factor of 1</p>	<p><b>To Calculate water use</b>, the District obtains an average of winter and summer water usage for each non-residential customer from the Marin Municipal Water District. Excluded is water used solely for irrigation, and recycled water that does not enter the District's sewer system, i.e. water not used for toilet flushing, laundry, commercial car washes, etc.</p>
<p><b>Mixed uses—high and domestic strength</b></p>	<p>The basic rate times the average summer and winter water use times a strength factor of 2.0</p>	
<p><b>High strength users:</b> restaurants, cafes, bakeries, mortuaries, hotels with restaurants, markets with disposal</p>	<p>The basic rate times the average summer and winter water use times a strength factor of 2.6</p>	
<p><b>Industrial and other high-strength users</b></p>	<p>Contact the district for assistance</p>	

## MAJOR BENEFITS OF THE UPGRADE PROGRAM

The upgrade program and sewer service charge increase would provide these major benefits:

- Complete essential improvements to the District's aging sewer system.
- Continued effective and efficient high-quality and reliable wastewater collection, treatment and recycling.
- Protection of the environment.
- Compliance with ever-increasing state and federal regulations.
- Continued sound fiscal practices.

## TO PROTEST THE PROPOSED CHANGES

Protests against the proposed rate increase must be submitted in writing, must identify the owner(s) of the property or properties for which the protest is entered, and be signed by the property owner. They must be submitted to the District before the end of the public hearing to be held on June 4, 2009 at 6:00 p.m. If written protests against the proposed sewer service charge rates are presented by a majority of owners of parcels affected, the District will not approve the increase in rates.

## PLEASE CONTACT US

If you have questions or comments about the proposed sewer rate increase, you may:

**Address the Directors:** Attend the Public Hearing on June 4, 2009 at 6:00 p.m. at the Miller Creek School gym, 2255 Las Gallinas Avenue, San Rafael.

**Phone:** 415-472-1734

**FAX:** 415-499-7715

**E-Mail:** info@lgvsd.org

**Write:** 300 Smith Ranch Road, San Rafael, CA 94903

## NOTICE TO PROPERTY OWNERS OF PUBLIC HEARING ABOUT PROPOSED CHANGES IN SEWER SERVICE CHARGES

**Thursday June 4, 6:00 p.m.**

**Las Gallinas Valley Sanitary District**

**Miller Creek School gym,  
2255 Las Gallinas Avenue,  
San Rafael**

 Printed on recycled paper using soy-based inks.



300 Smith Ranch Road, San Rafael, CA 94903  
Phone 415-472-1734 • Fax 415-499-7715  
www.lgvsd.org

### Board of Directors

Megan Clark  
Russell R. Greenfield  
Larry Loder  
Craig K. Murray  
Judy Schriebman

### District Administration

Mark R. Williams, *General Manager*

### SPECIAL LEGAL NOTICE

This notice was mailed using a legally mandated property roll list. You may receive more than one copy if you own multiple properties or own properties under more than one name. We apologize for any inconvenience.

Presorted  
Standard  
US Postage  
PAID  
GMS