

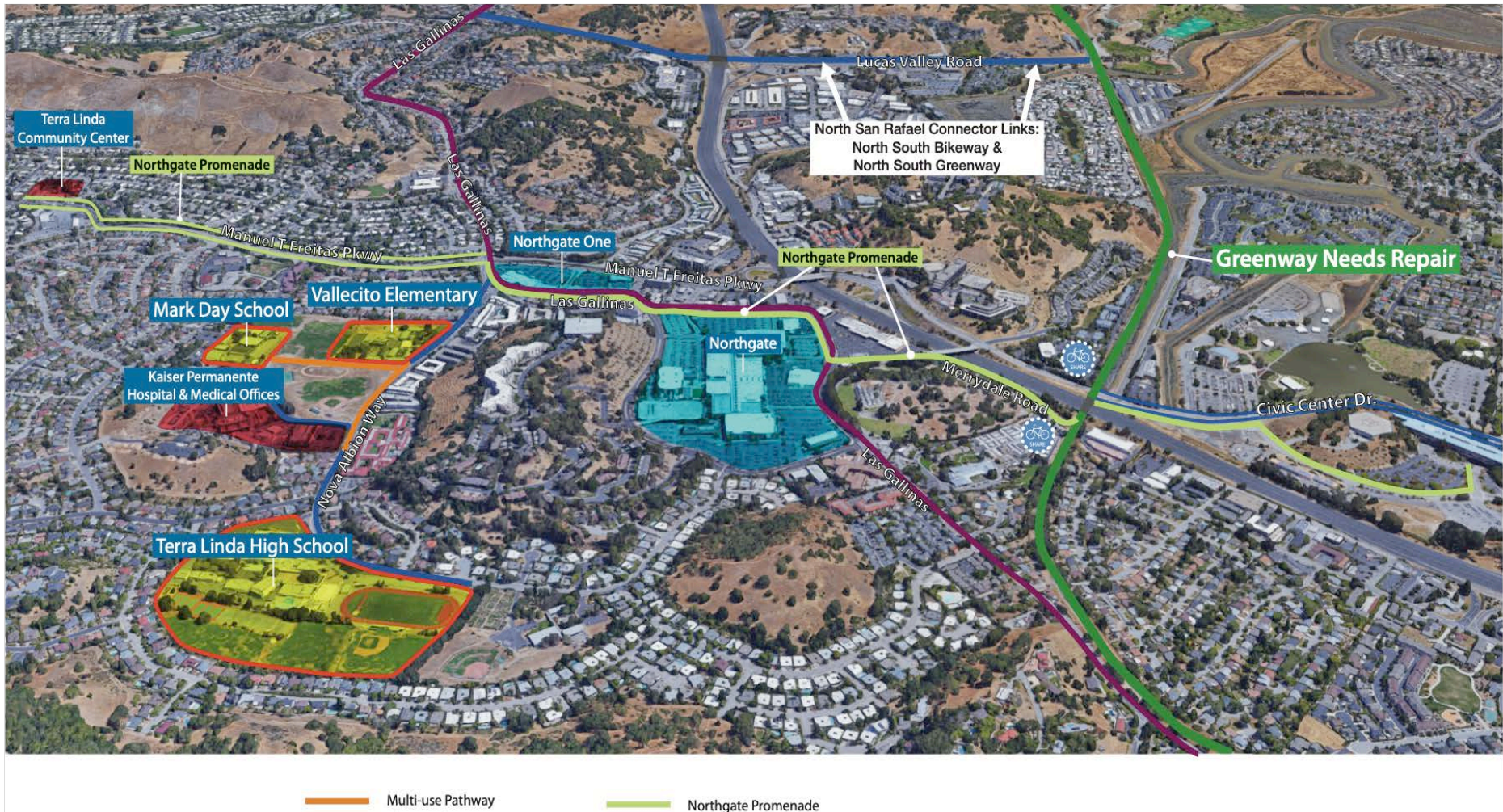
NORTH MERRYDALE PROMENADE

Presentation to the Las Galinas Valley Sanitary District

January 31, 2019

Promenade: connecting the community

NORTH SAN RAFAEL SCHOOLS & COMMUNITY ACTIVITY FACILITIES



Promenade background

- 1996: North San Rafael Vision
- 2002: North San Rafael Vision Promenade Conceptual Plan
- 2011: San Rafael Bicycle Pedestrian Master Plan
- 2012: San Rafael Civic Center Station Area Plan
- 2016: San Rafael General Plan
- 2018: San Rafael Bicycle Pedestrian Master Plan Update

North Merrydale Promenade project area



Property boundaries



Concerns with parking along Merrydale

- Dead-end street means cars must turn around
- Limited right-of-way width along Merrydale
- No parking = less new paving
- Eliminating parking will allow:
 - Easier entry/exit at LGVSD site
 - Separation of pathway from roadway
 - Room to create bioswales to filter runoff
 - Fewer potential conflicts with cyclists and pedestrians (especially risk of “dooring”)
 - Safer and more attractive promenade for users

Parking, continued

And, there are many opportunities for parking on east side of 101:

- SMART committed to providing 130 spaces along Avenue of the Flags
- Approx. 80 spaces along Avenue of the Flags
- Approx. 30 spaces along Civic Center Drive

Total: 240 parking spaces, or **FOUR TIMES** the peak demand of 60 spaces

➔ Parking is not needed on Merrydale to meet demand

Parking in neighborhood



— Parking opportunities

— Project area along Merrydale

The community's vision:

- 12-foot multiuse promenade pathway connecting Northgate and SMART
 - Also connects neighborhoods to the west with the Civic Center area, which were divided when 101 freeway was built
- No parking along Merrydale Road
- Turnaround and drop-off at end of North Merrydale
- Low-impact stormwater treatments along North Merrydale
 - With plants and other features to filter runoff and reduce flooding

Where does LGVSD fit in?

- We support LGVSD's need for easy and unrestricted access to its property
- We ask for your support for our vision for safe pedestrian and bicycle passage in the area
- We ask your consideration of possible use of a small corner of your property to facilitate these goals