

SSO SPILL SUMMARY

- No Spills to Report

KEY MAINTENANCE PROJECTS - Maintenance was completed on the following:**Bio-Wheel Repairs**

- 14 Pin replacements
- 29 Link replacements

Emergency Repair

- Removed and replaced complete drive unit on bio-wheels.

Key Maintenance Projects

- Completed 589 Routine Preventative Maintenance Work Orders for the Treatment Plant, Pump Stations and Reclamation.
- Removed and replaced two 5000-gal storage tanks with new tanks and plumbing for the Poly Aluminum Chloride and Ferric Chloride systems.
- Removed and rebuilt 3 gear box units for the bio-wheel drive units.
- Installed two new gates in reclamation.
- (400) Fleet Maintenance Inspections

SAFETY ISSUES AND TRAINING

- Forklift Operator Certification – Du-All
- Fundamentals of Rigging and Signaling (Crane/Overhead Hoist) – Du-All
- Fire Extinguisher/Fire Safety – Du-All

OTHER

- Collection System – Pump Station Maintenance (Routine)
- Air Release Valve Maintenance (Quarterly)

REQUESTS FOR PROPOSALS

- None

PERFORMANCE METRICS***Collection System Cleaning and CCTV Inspection***

- Flushed/Rodded = 118,045 feet; Percent of District = 21.3%.
- CCTV Inspected = 41,605 feet; Percent of District = 7.5%
- Manhole inspections performed = 634
- USA Ticket Work Orders = 564

CNG Fueling Stations

- Smith Ranch Fuel Station
 - 10 Fill-ups
 - Total Diesel Gallon Equivalent (DGE) = 263 DGE
 - Average MPG = 4.55 MPG/3-month miles driven = 1,037.8

Pump Station Highlight – Smith Ranch (3 – 20hp Flygt Pumps)

Location: Smith Ranch Road at Silveira Parkway, San Rafael CA 94903

Parcel 155-300-19

Date Constructed: 1964

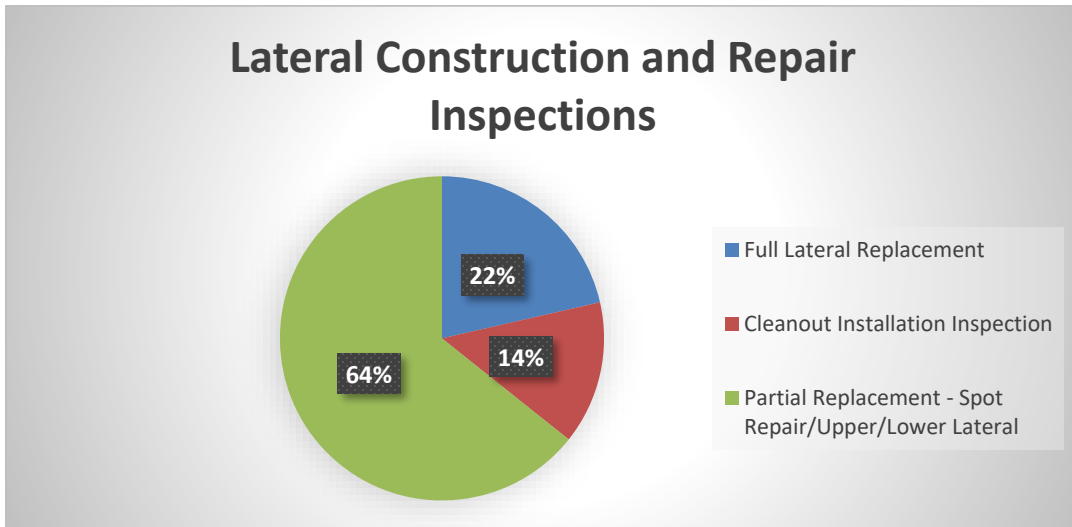
Expansions: 1993, 2008

Estimated wet well capacity: approximately 8,812 gallons



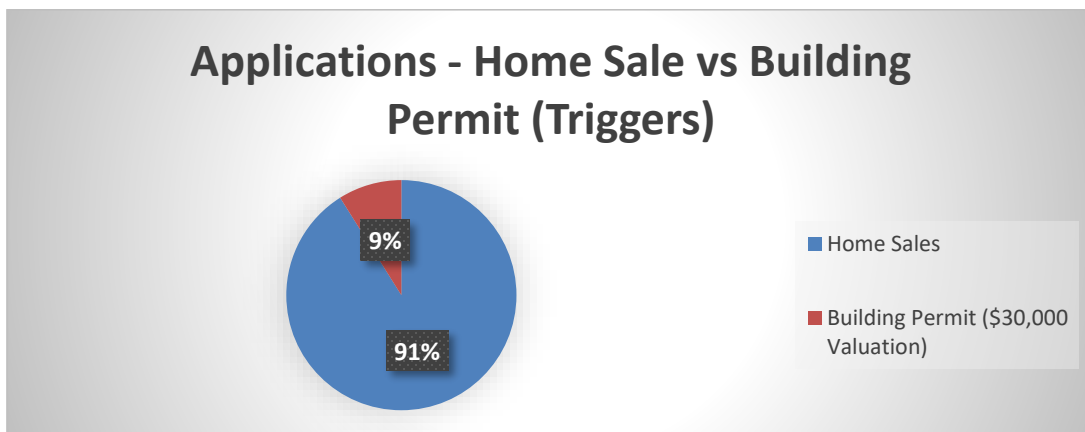
Lateral Construction and Repair Inspections

- Applications received = 13; Actual Inspections Performed = 12
- Full Replacement Inspections Performed = 3 Full Replacements
- Cleanout Installation Inspections Performed = 2 Cleanout Installations
- Spot Repairs/Upper/Lower Replacements Performed = 9 partial replacements or spot repairs



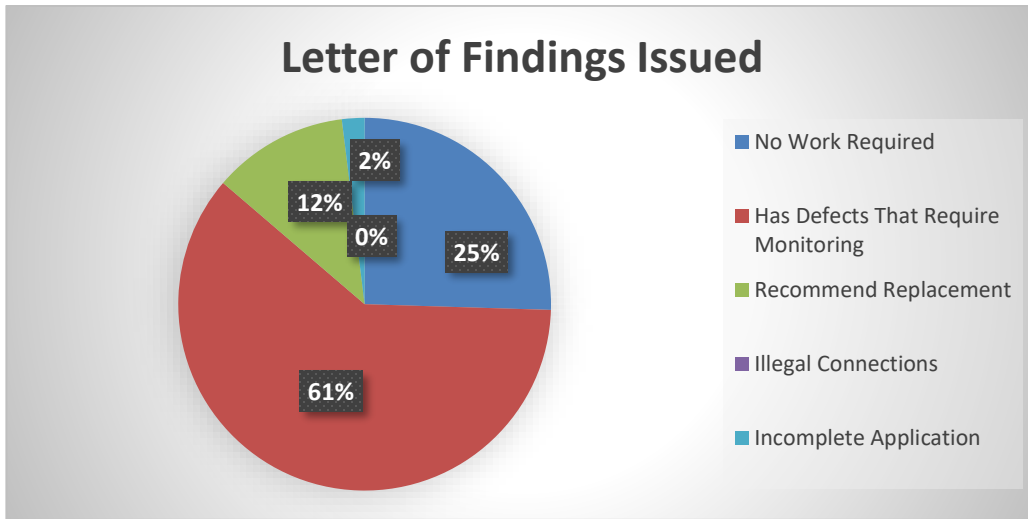
Sewer Lateral Ordinance No. 180 - Number of Applications Processed

- Home Sale Applicants = 51 received
- Building Permit (\$30,000 valuation) Applicants = 5 received



Sewer Lateral Ordinance No. 180 - Letter of Findings

- Home Sale Letter of Findings Issued = 51; 6 - recommend replacement, 31-have defects that require monitoring, 13 - no work or monitoring required, 1 – Incomplete Applications, 0 – Illegal connection



Total # of Recommended Lateral Replacements vs Actual Replacements

- Ordinance 180 – 219 Recommended Replacements vs 82 Actual Replacements

